

# STUTTHOF CONCENTRATION CAMP

(near Gdansk - approx. 30km)



The  camp to be open by the Nazi in Poland...  
... the  one to be liberated.

It was in operation in  after the invasion of Poland in World War II.

It was the last camp liberated by the  on May 9, 1945.

Today Stutthof is a museum.



Entrance



Stutthof Concentration Camp



Himmler touring Stutthof

Totally about  people were detained in this camp...  
more than  people were killed.

## FROM AN INTERNMENT CAMP TO THE "FINAL SOLUTION"

Stutthof was a civilian internment camp under Danzig police...

1939

1941

... it became a "labor education" camp.

...it became a

It was composed of 8 barracks for the prisoners  
and a "kommandantur" for the SS guards.

1942

1943

A new camp was constructed with electrified barbed-wire fence

30 new barracks +  +

It was the beginning of mass executions,

Stutthof was included in the  in June 1944.

1944

1945

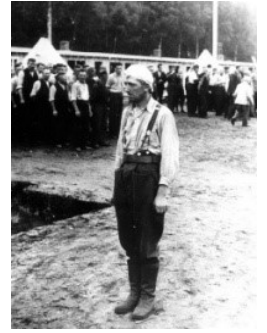
The camp was liberated by the Allies, on May 9, 1945.

## LIFE CONDITION IN THE CAMP

- First, the prisoners were mainly **Polish people**.

The prisoners were forced to  cut the trees, build sheds and huts ....

- Then, the prisoners were also from different countries: *Russia, Belarusian, Lithuania, Latvia, Estonia, Czech Republic, Slovakia, Rumania, Germany, Austria, Hungary, Yugoslavia and Spain...*



## ■ Conditions in the camp were brutal.

♦ Prisoners worked  hours a day,  days a week. They lived in wooden barracks with no \_\_\_\_\_, no \_\_\_\_\_, no \_\_\_\_\_ and no \_\_\_\_\_.

♦ The lack of proper, warm clothes was a huge problem because winter was severe.

♦ A lot of people died of **starvation (hunger)** .

## ■ Horror...

sent the prisoners who were too weak or sick to gas chamber.

began in **June 1944**.

♦ Camp  also killed sick or injured prisoners with **lethal injections**.



# STUTTHOF CONCENTRATION CAMP

(near Gdansk - approx. 30km)



The 1st camp to be open by the Nazi in Poland...  
... the last one to be liberated.

It was in operation in 1939 after the invasion of Poland in World War II.

It was the last camp liberated by the Allies, on May 9, 1945.

Today Stutthof is a museum.



Entrance



Stutthof Concentration Camp



Himmler touring Stutthof

Totally about 110,000 people were detained in this camp...  
more than 85,000 people were killed.

## FROM AN INTERNMENT CAMP TO THE "FINAL SOLUTION"

Stutthof was a civilian internment camp under Danzig police...

1939

1941

...it became a "labor education" camp.

...it became a concentration camp.

It was composed of 8 barracks for the prisoners  
and a "kommandantur" for the SS guards.

1942

1943

A new camp was constructed with electrified barbed-wire fence

30 new barracks + a crematorium + a gas chamber

It was the beginning of mass executions,

Stutthof was included in the "Final Solution" in June 1944.

1944

1945

The camp was liberated by the Allies, on May 9, 1945.



## LIFE CONDITION IN THE CAMP

- First, the prisoners were mainly **Polish people**.

The prisoners were **forced to work** - cut the trees, build sheds and huts ....

- Then, the prisoners were also from different countries: *Russia, Belarusian, Lithuania, Latvia, Estonia, Czech Republic, Slovakia, Rumania, Germany, Austria, Hungary, Yugoslavia and Spain...*



- **Conditions in the camp were brutal.**

♦ Prisoners worked **10 hours a day, 7 days a week**. They lived in **wooden barracks** with no bed, no door, windows and no hygien.

♦ The lack of proper, warm clothes was a huge problem because winter was severe.

♦ A lot of people died of **starvation (hunger)** .

### ■ **Horror...**

♦ The SS guards sent the prisoners who were too weak or sick to gas chamber.

♦ **Zyklon B** began in **June 1944**.

♦ Camp doctors also killed sick or injured prisoners with **lethal injections**.

